

# Workforce Transformation overview

We help companies **drive value from their global mobility programs** through a wide variety of consulting services:

## 1. STRATEGY



Set and communicate the vision for global workforce mobility, to enable business, people and talent development strategies

## 2. SCOPE AND POLICY



Define the scope of workforce mobility including newer types (e.g. Int. new hires, commuters, virtual assignments) and create a policy framework to support them, with the right options and flexibility

## 3. OPERATING MODEL



Design or reimagine the mobility operating model so that it's fit for our client's future and helps them better leverage their people, technology, and vendors

## 4. USER EXPERIENCE



Understand what matters most to mobile employees, HR, and the business—determine whether their mobility program delivers this and create the interventions that need to be made

## 5. SUCCESS AND OUTCOMES



Determine what success looks like and set the targets and measures needed to drive an effective program

## 6. COSTS AND VALUE

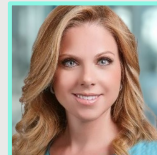


Review program costs and outcomes, and shape what the client wants and needs. Identify quick wins and mid-to-longer term opportunities for sustained improvements

## Contact us



**Eileen Mullaney**  
Global Leader, Workforce Transformation and Managed Services  
[eileen.mullaney@vialto.com](mailto:eileen.mullaney@vialto.com)



**Jill Buzzelli**  
Americas Leader, Workforce Transformation and Managed Services  
[jill.buzzelli@vialto.com](mailto:jill.buzzelli@vialto.com)



**Selina Keller**  
APAC Leader, Workforce Transformation and Managed Services  
[selina.keller@vialto.com](mailto:selina.keller@vialto.com)



**Clare Hughes**  
EMEA Leader, Workforce Transformation and Managed Services  
[clare.d.hughes@vialto.com](mailto:clare.d.hughes@vialto.com)